

# Firmware Release 4.08

For the Power Sensors

R&S®NRP-Z11/-Z21/-Z22/-Z23/-Z24

## Contents

<b>1) Important Notes</b>	<b>2</b>
<b>2) Installation Software</b>	<b>2</b>
<b>3) Prerequisites concerning the PC</b>	<b>2</b>
<b>4) Connection between PC and R&amp;S®NRP-Zxx</b>	<b>2</b>
<b>5) Procedure of a firmware update</b>	<b>2</b>
<b>6) New and modified Functions (since release 4.01)</b>	<b>5</b>
<b>7) Problems Eliminated (since release 4.01)</b>	<b>5</b>
<b>Appendix: Contact to our hotline</b>	<b>5</b>

## **1) Important Notes**

This package contains the firmware for the power sensor R&S®NRP- Z11/-Z21/-Z22/-Z23/-Z24. Each firmware update consists of one file: application firmware and boot loader are merged together. This file should be downloaded into the sensors to get the latest functionality. The firmware release 4.08 is suitable for all power sensors R&S®NRP -Z11/-Z21/-Z22/-Z23/-Z24 already delivered. The firmware for the R&S®NRP base unit as well as the firmware for other R&S®NRP-Zxx power sensors is available as a separate package.

## **2) Installation Software**

Use the Firmware Update program tool from the R&S®NRP toolkit to load the new firmware for the power sensor R&S®NRP- Z11/-Z21/-Z22/-Z23/-Z24. The toolkit is supplied on a CD-ROM together with the sensors. It is also available on the internet under [www.nrp.rohde-schwarz.com](http://www.nrp.rohde-schwarz.com).

## **3) Prerequisites concerning the PC**

A 32-bit-WINDOWS operating system with USB support (WINDOWS 98SE/ME/2000/XP) must be installed. For the update process, one free USB port is required. The R&S NRP toolkit needs about 10 MByte of free space on the hard disk and must be installed prior to the update process.

## **4) Connection between PC and R&S®NRP-Zxx**

For the connection between the PC and the R&S®NRP sensor, use the R&S®NRP-Z3 active USB adapter or the R&S®NRP-Z4 passive USB adaptor.

## **5) Procedure of a firmware update**

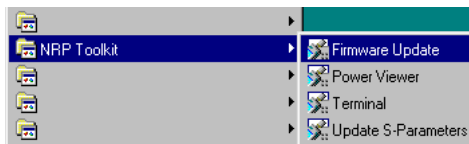
- Preparation  
Install the R&S®NRP toolkit software onto the PC prior to operation of the sensor.
- Connection
  - ✓ Connect the R&S®NRP power sensor to the PC using either R&S®NRP-Z3 or R&S®NRP-Z4.
  - ✓ Unplug any other R&S®NRP power sensor or R&S®NRP base unit from the PC.
  - ✓ After connecting the power sensor, the PC should identify the new USB hardware and assign the appropriate device driver from the R&S®NRP Toolkit (brief message appears in a small window after first connect to the used PC).



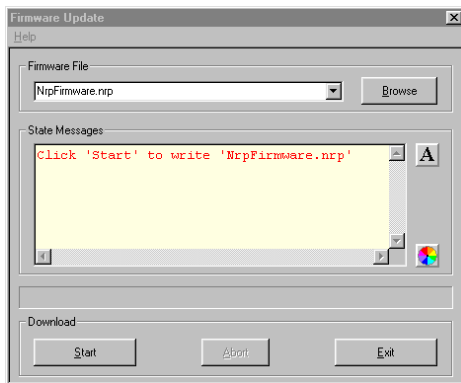
If you forgot to install the R&S®NRP Toolkit software beforehand, Windows will not succeed to find a USB driver for the power sensor. If this happens, the R&S®NRP-Zxx is highlighted by a yellow exclamation mark in the Windows device manager. In this case, proceed as follows:

- Abort the dialog for driver installation.
- Install the R&S®NRP Toolkit from the CD-ROM.  
Then manually assign the USB driver from the toolkit to the R&S®NRP.
- Go to Control Panel – Add/Remove Hardware and start the hardware assistant to search for new components.
- Select the R&S®NRP-Zxx in the list of hardware components and complete the driver installation.
- Unplug the power sensor and reconnect it.

- Updating the application firmware



- ✓ Start **NRP Toolkit – Firmware Update** from the Windows Start menu.



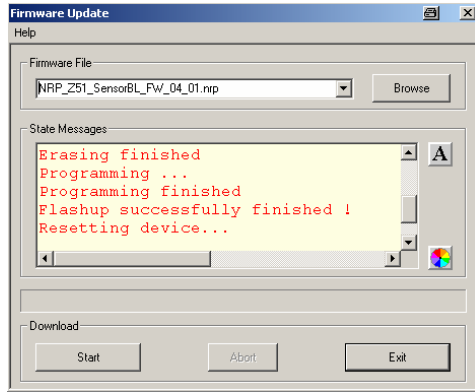
The dialog box on the left is displayed next.

- ✓ Search for the file named `NRP_Zxx_SensorFW_BL_04_08.nrp` by using the **Browse** button or enter the file name (including the directory path) of the application firmware in the **Firmware File** box
- ✓ Click the **Start** button to start the file transfer. The update is performed automatically.

Note:



- ✓ Do not disconnect the power sensor from the PC.
- ✓ Neither connect nor disconnect the power supply for the active adapter R&S®NRP-Z3.
- ✓ **Always wait until the reset of the device is finished!**
- ✓ Exit the Firmware Update program only after it has been completely executed.

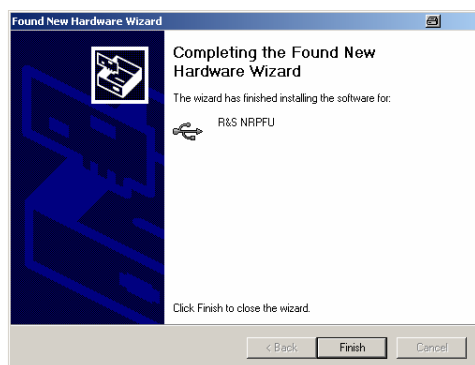


- ✓ During the update process, the State Messages box informs you of the progress. The update has been completed successfully if the message 'Device <Type Designation><Serial Number> is active' appears.
- ✓ After a successful update you can use the power sensor immediately for measuring.



**Potential problems**

- ✗ Error in the compatibility and consistency checks  
*In this case, the update is aborted and an error message is displayed.*
  - Unplug and reconnect the USB sensor
  - Restart the firmware update
- ✗ When performing the firmware upgrade the first time on a PC, the installation of the unknown USB device R&S NRPFU is required. The **Found New Hardware Wizard** opens:
  - Click the **Next** button
  - Click the **Finish** button
  - Abort and close the firmware update tool
  - Unplug and reconnect the USB sensor
  - Restart the firmware upgrade



**6) New and modified Functions** (since release 4.01)

- The sensors now fully support the NRP-Power analysis with the R&S®SMF Scalar network analysis can be performed by means of the SMF100A signal generator with the SMF-K28 power analysis option plus an NRP-Zx power sensor. All available features of the power analysis are supported by the NRP-Zx power sensors.

**7) Problems Eliminated** (since release 4.01)

- Calibration data can be read out with NRVC again

**Appendix: Contact to our hotline**

Any questions and ideas concerning the instrument are welcome to our hotline:

Phone: ++49-1805-124242

FAX: ++49-89-4129-13777

e-mail: [CustomerSupport@rsd.rohde-schwarz.com](mailto:CustomerSupport@rsd.rohde-schwarz.com)